

Municipality of Kincardine



Kincardine Community Medical Clinic Clinic Phase II

Project Status to Jan 2010

KCMC Phase 2 Expansion

Current Status:

Total Construction Cost = \$2,351,200

Completion to date end of 2009 = \$1,132,000

50% complete of 46 week schedule to July 2010

Consultant fees to date \$238,446. Fixed fee \$250,000

Cash Allowances:

\$10,419 expended for inspection and testing.

Change Orders:

\$30,000+/- parking gate relocation and circulation modifications to site.

KCMC Phase 2 Expansion

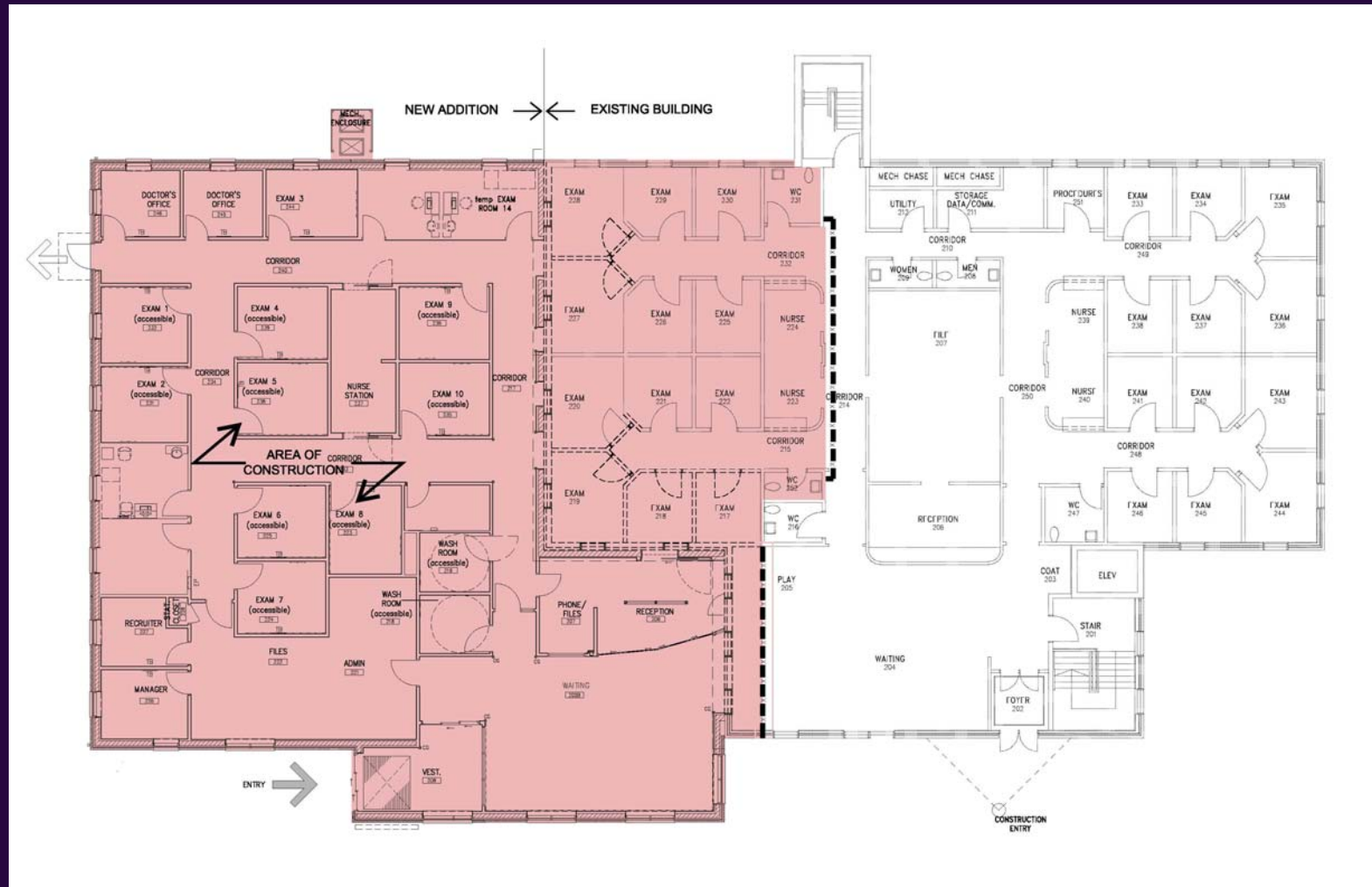
Construction Progress

- Phase 1 complete lower level temporary clinic occupied.
- Phase 2 addition exterior envelope near complete, interior partition layout underway. Completion scheduled for end of April.



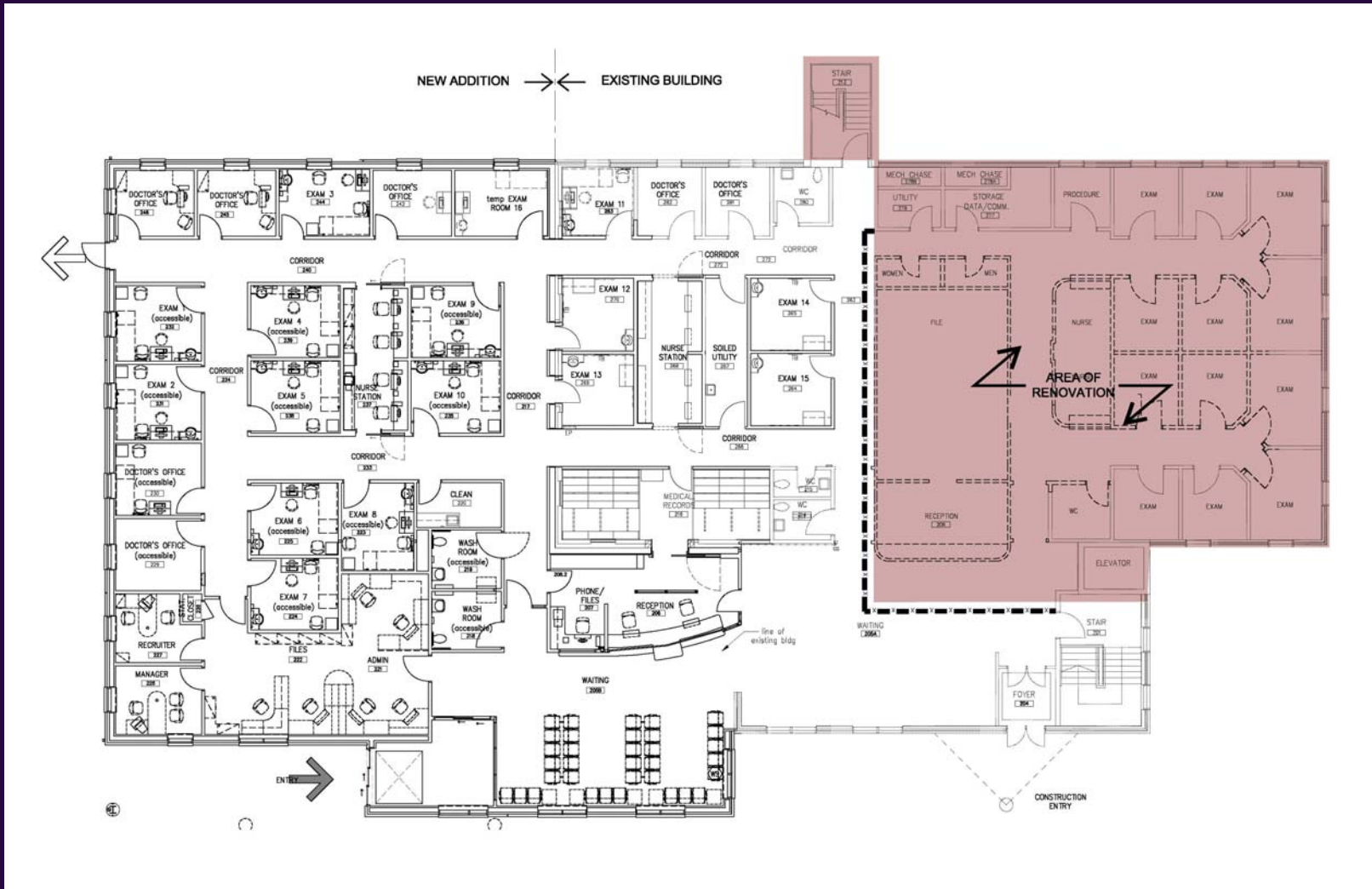
KCMC Phase 2 Expansion

Current Phase 2



KCMC Phase 2 Expansion

Phase 3 Upper Level



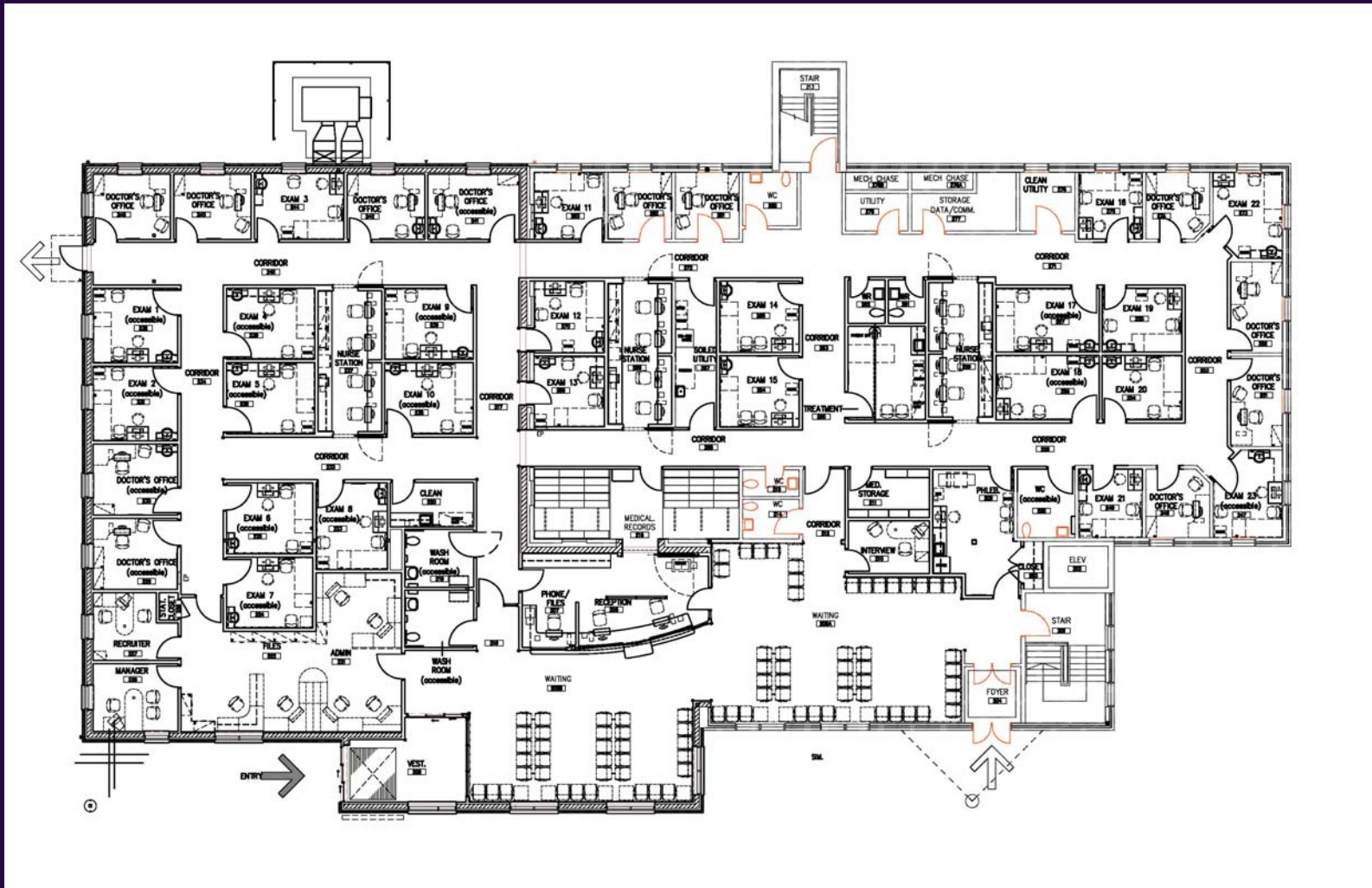
KCMC Phase 2 Expansion

Phase 3 Lower Level



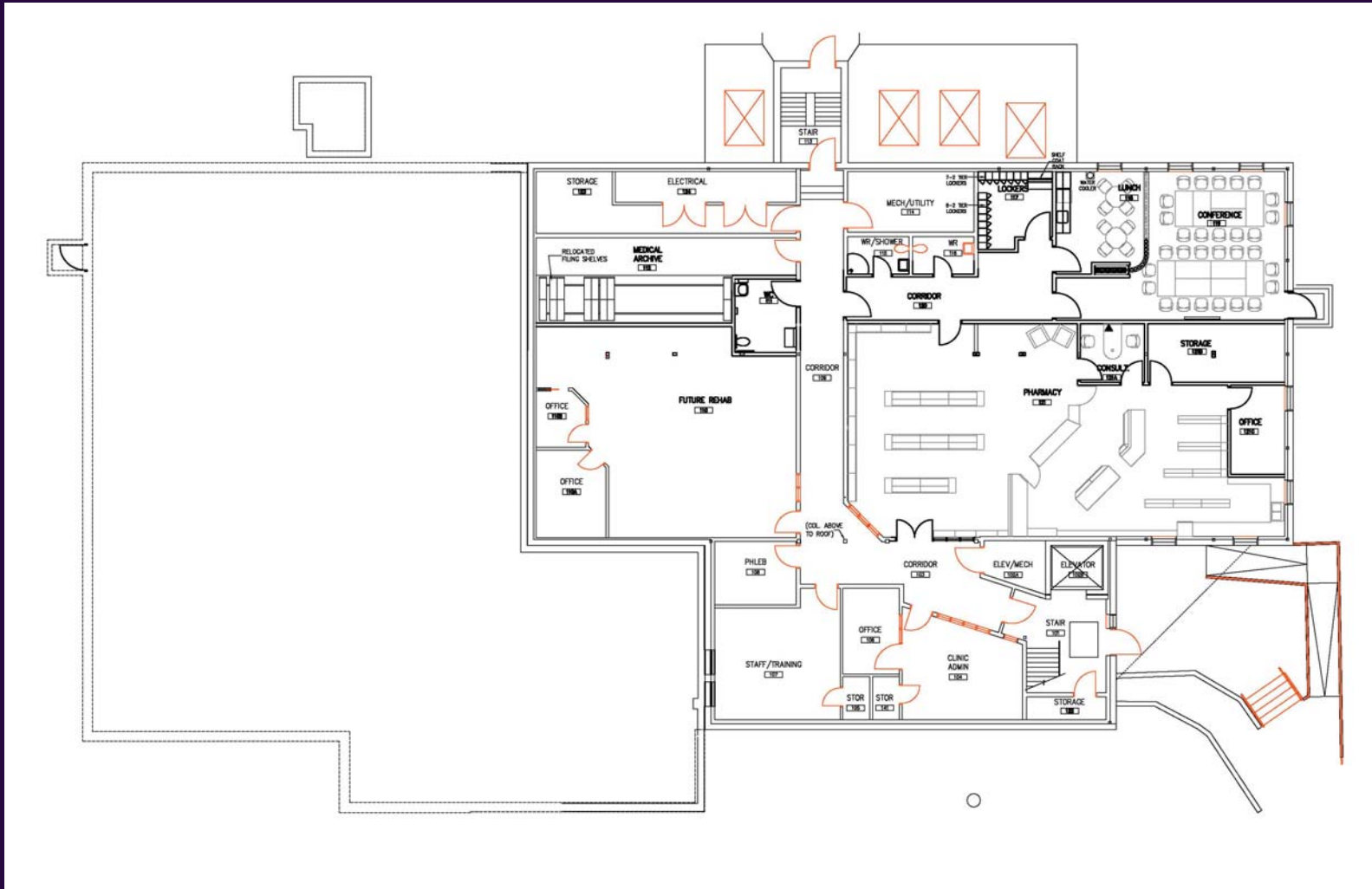
KCMC Phase 2 Expansion

Complete Upper Level



KCMC Phase 2 Expansion

Complete Lower Level



KCMC Phase 2 Expansion

Site Plan

